



Mattress Recycling Council®

**BYE BYE MATTRESS
COMMERCIAL
VOLUME PROGRAM
COLLECTION GUIDELINES**

CALIFORNIA | JULY 2022



TABLE OF CONTENTS

About the Program	3
Mattress Recycling Council	
Commercial Volume Program	
Contacts	
Pickup Eligibility and Participation Requirements	4
Program Materials	5
Included Products	
Excluded Products	
Bed Bug Identification	
Mattress Inspection and Examination	8
Acceptable Quality	
Unacceptable Quality	
Materials Collection & Handling	9
Minimum Site Requirements	
Acceptable Loading	
Unacceptable Loading	
Transportation & Processing	11
Recordkeeping	12
Program Withdrawal & Termination	13

These guidelines describe the program and what your facility (collection site) needs to do to participate. For simplicity, these guidelines will refer to mattresses and box springs as mattresses. MRC reserves the right to update, change, modify, amend, add or remove terms or otherwise alter these guidelines at any time with or without prior notice.

ABOUT THE PROGRAM

Mattress Recycling Council

The Mattress Recycling Council (MRC) is a nonprofit organization formed by the bedding industry to operate the Bye Bye Mattress recycling program in states that have enacted mattress recycling laws – California, Connecticut and Rhode Island.

In each of these states households and businesses now have no-cost options to recycle mattresses. Businesses may recycle through the Commercial Volume Program by dropping off units directly at a participating location or eligible entities can arrange transportation with MRC. Households may directly recycle through a local collection site or event or indirectly through a residential bulky item curbside collection program or retailer that takes back old units when delivering new ones.

Bye Bye Mattress is made possible when consumers purchase a mattress or box spring. Fees vary by state and each state fee funds that state's program. The fee is primarily used to establish collection sites and events, transport mattresses from those locations to recyclers and cover the cost to disassemble the mattresses. Portions of the fee are also used for combatting illegal dumping, researching improvements to the recycling process and identifying new uses for materials, as well as conducting public education and outreach.

Commercial Volume Program

MRC provides California businesses and organizations the following opportunities to recycle mattresses at no cost.

- Any business or organization may drop off any number of units at a participating recycler. Contact the desired location to make arrangements. View the current listing at:
byebyemattress.com/programs-by-state/ca-commercial-sites/
- Any business or organization may drop off units at a site that is accepting commercial volume at no cost. Unit limits may apply or an appointment may be required. View the current listing at:
byebyemattress.com/programs-by-state/ca-commercial-sites/
- Eligible entities (ie: retailers, health care facilities, educational facilities, military bases, and lodging establishments) with at least 100 units to recycle can request transportation services. 14 days advance notice required. Contact MRC for details.

Contact:

Joy Broussard, 707-307-3052

cvp@mrc-us.org

PICKUP ELIGIBILITY AND PARTICIPATION REQUIREMENTS

MRC provides no-cost transportation and recycling of mattresses to eligible entities (ie: retailers, health care facilities, educational facilities, military bases, and lodging establishments) with at least 100 units to discard. All units must have been used and discarded in California and MRC requires 14 days notice to secure transportation.

Eligibility

RETAILERS

- Must be registered with MRC, remitting the recycling fees and compliant with all provisions of California's Used Mattress Recovery and Recycling Act.
- Must have accumulated a minimum of 100 units. Partnering with other local businesses, organizations or allowing public drop-off to reach the minimum is permitted.
- Those collecting at least 100 units monthly may request a permanent trailer.

OTHER COVERED ENTITIES

Hotels & Lodging Facilities, Universities & Educational Facilities, Military Bases, Healthcare

- Must have accumulated a minimum of 100 units. Partnering with other local businesses, organizations or allowing public drop-off to reach the minimum is permitted.

Participation

To receive MRC's assistance with transporting and recycling mattresses, the eligible entity must:

- Complete a registration form and return it no later than 14 days in advance of the desired pickup date.
- Agree to follow these guidelines.
- Provide a collection area that is capable of allowing access to a 53-foot trailer.
- Provide a minimum of two staff members to assist with loading units into the provided trailer.

PROGRAM MATERIALS

INCLUDED PRODUCTS

Mattresses: Defined as any sleep surface covered with ticking or fabric that contains resilient material such as steel innersprings, foam, fiber or other filling or upholstery materials, used alone or in combination, regardless of size or shape. This definition includes foam mattresses.

Futons: See mattress definition above. Futon mattresses must be detachable from the frame or base to be accepted. (Futon mattresses that do not detach from the frame or base are not included.)

Box springs (also commonly called foundations): A ticking or fabric-covered structure used to support a mattress or sleep surface and may be comprised of a frame, foam, springs or other structure, or other materials, used alone or in combination, regardless of whether the product is stationary or adjustable.

All items accepted for recycling by MRC must have been used and discarded in the state of California.



Mattresses from out of state sources cannot be recycled using MRC's program.

PROGRAM MATERIALS

MATTRESS INSPECTION AND EXAMINATION

Facility staff should screen incoming mattresses to determine whether they are suitable for recycling and should remove mattresses that are:

- Excessively wet or frozen
- Severely twisted, punctured or crushed
- Infested with bed bugs or other living organisms
- Exceptionally soiled or moldy

Mattresses not suitable for recycling should be disposed of through your existing solid waste stream.

Bed Bug Identification

Mattresses and box springs infested with bed bugs are unacceptable for recycling and should be disposed of through your existing solid waste stream. Facility staff should evaluate program materials for evidence of bed bug infestation. A training webinar focused on dispelling health related myths, identifying bed bugs and offering best practices for protecting staff can be found here:

<https://www.mattressrecyclingcouncil.org/resources>



Signs of bed bug activity may be more obvious than the insects themselves. Look for clusters of dark spots or smudges on mattresses (fecal spots), especially along seams. Eggs, shed skins and all life stages of bed bugs may also be present in these 'soiled' areas.

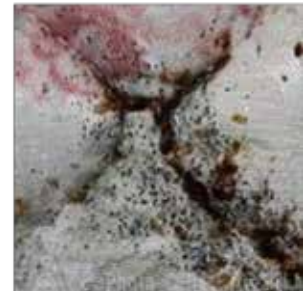


Bed bugs are tan to brown in color, but may appear redder if they have fed.

Adult Bed Bugs are dorsally flat insects, broadly oval and the size of an apple or melon seed (1/4").

Nymphs look like adults in shape but are smaller.

Eggs are white and barrel-shaped.



For more information on bed bugs, please refer to the resources made possible by the **Connecticut Coalition Against Bed Bugs** at www.ct.gov/caes/CCABB

QUALITY STANDARDS

Acceptable Quality

IMPORTANT: Only units used and discarded in California are accepted by the program.

Shown here are examples of acceptable units.

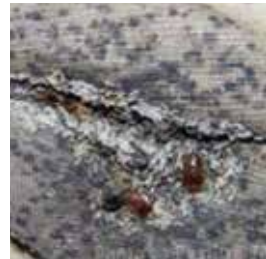


Unacceptable Quality

Shown here are examples to illustrate severe damage, heavy soiling and infestation.

Other Conditions:

- Out-of-state mattresses
- Severely damaged or soiled mattresses
- Mattress that have been stripped of padding components.
- Pillows and cushions
- Fold-out sofa beds and futon frames or bases
- Loose mattress pads, toppers
- Loose bedding, blankets, or sheets
- Water beds
- Fire damaged units



MATERIALS COLLECTION & HANDLING

Each facility's collection site will have unique operational considerations. Participating facilities must make their own decisions about how to best manage their operations in the safest manner possible in accordance with applicable laws. At a minimum, each facility's collection site must meet these requirements:

MINIMUM PROGRAM REQUIREMENTS	
SITE	Each collection site must be secure with adequate space and staffing to handle and store acceptable mattresses.
PERMITS	Each collection site must have knowledge of and comply with all applicable federal, state and local laws. These may include, but are not limited to, zoning requirements, state permit requirements and OSHA or other workplace requirements. Please contact your Local Enforcement Agency (LEA) to confirm whether your site is in compliance with all applicable notifications or requirements for accepting mattresses for recycling at your site. In many cases, this will be your county or local Public Health Department.
INSURANCE	Each collection site must maintain general liability insurance of at least \$1,000,000 per occurrence.
TRAINING	Staff at each collection site must be trained and knowledgeable regarding these guidelines before accepting mattresses for recycling.
STORING & LOADING MATTRESSES See page 10 for photos and guidelines	<p>Collection sites must keep mattresses dry by storing in weatherproof containers or under cover to maximize their recyclability. In addition, all collection sites must:</p> <ul style="list-style-type: none"> • Make every effort to place mattresses in MRC-designated storage containers immediately upon acceptance • Keep mattresses intact and not intentionally crush or puncture them • Efficiently stack mattresses to maximize the number of units loaded in each storage container • Provide oversight to keep unacceptable items out of MRC- designated storage containers • Remove any non-program materials from MRC-designated storage containers before transport to MRC recyclers • Practice good housekeeping standards and keep storage containers and program materials in a neat and orderly condition
SITE ACCESS	Collection sites must allow MRC access to confirm compliance with these guidelines.

LOADING INFORMATION

LOADING MATTRESSES IN STORAGE CONTAINERS

Expected number of mattresses that should fit in various container sizes:

Container Type	Number of Mattresses
20-foot sea container	30-45
28-foot trailer	60-95
40-foot sea container	75-95
40-yard roll-off container	35-50
48-foot trailer	110-180
53-foot trailer	125-190

Acceptable Loading

- 1. Begin each stack with a queen or full size box spring.**
This acts as a base pallet to create a secure stack and makes unloading of mattresses quick and efficient.
- 2. Mattresses should be stacked horizontally** to the top of the trailer to maximize space.
- 3.** In small quantities, king size mattresses can be placed vertically next to a stack of horizontal mattresses.
- 4.** If there are more than 10 king size units, stack horizontally.



Unacceptable Loading

IMPORTANT: Do not load units vertically or in an unsafe manner.

Please contact your Program Coordinator to learn more about acceptable/non-acceptable units and appropriate stacking and loading techniques.



TRANSPORTATION & PROCESSING

TRANSPORTERS

MRC will assign each collection site a transporter to provide a storage container and transport services.

- MRC-contracted transporters will provide participating facilities with evidence of automobile insurance coverage of at least \$1,000,000 per occurrence.
- Each facility should notify transporter at least two business days before a storage container is full of mattresses if a permanent container is on site.
- The assigned transporter will pick up full containers within two business days of notification and drop off an empty container at the same time.
- On the scheduled pick up day, the facility must make the collection container readily accessible to the transporter.
- At the time of pick-up, facility staff must be present to sign a three-part Bill of Lading (BOL) supplied by the transporter that details the quantity of mattresses in the container and must provide appropriate copies of the BOL to the transporter.

A facility may choose to provide its own storage containers and transportation at its own cost. View a current list of locations that accept commercial volume at byebyemattress.com/programs-by-state/ca-commercial-sites/.

RECYCLERS

Recyclers under contract with MRC will meet established recycling standards and accurately account for all mattresses received, the mattress components recycled (e.g., foam, steel, wood, fiber, etc.) and any residual disposal. MRC will assign a recycler to best service your facility.



RECORDKEEPING

Bill of Lading:

A Bill of Lading (BOL) will be provided by the transporter. Before a full container leaves the site, the BOL must be completed and signed by facility staff.

BILL OF LADING		DATE:
Unique BOL #: pre-printed #		
Collection Site/ Generator		
Name: _____		
Address: _____		
Type of Collection Site:	<input type="checkbox"/> municipal transfer station <input type="checkbox"/> mattress retailer <input type="checkbox"/> other: _____	
Collection Container Type:	<input type="checkbox"/> 20 ft. sea container <input type="checkbox"/> 30 yd. roll off <input type="checkbox"/> 40 yd. roll off	
	<input type="checkbox"/> 53 ft. trailer <input type="checkbox"/> other: _____	
Collection Site Count:	Mattress & Box Spring Units: _____ Collection Site Certified Net Weight (if available): _____ lbs.	
Please check to confirm:	<input type="checkbox"/> To the best of my knowledge, ALL of these units were used (and discarded) in Rhode Island.	
<small>I hereby certify that I have personal knowledge of the information I have provided on this form, that this information is accurate to the best of my knowledge, and that I am authorized by my employer to complete and sign this form. I acknowledge that if I have provided false information on this form with an intent to deceive or misrepresent, my actions may expose my employer and me to criminal prosecution for fraud under federal or state law (including, but not limited to 18 U.S.C. § 1341 et seq.), and that if convicted, my employer and I may face punishment which could include substantial fines and jail.</small>		
_____ Name (print), Title	_____ Signature	_____ Date
Transporter		
Company Name: _____		
Address: _____		
Truck #:	Vehicle License Plate Number	State:
_____ Name (print), Title	_____ Signature	_____ Date
Mattress Recycler		
Company Name: _____		
Address: _____		
Recycler Count:	Mattress & Box Spring Units: _____ Collection Site Certified Net Weight (if available): _____ lbs.	
Please check to confirm:	<input type="checkbox"/> To the best of my knowledge, ALL of these units were used and discarded in Rhode Island.	
Comments/Count Discrepancies: _____		
<small>I hereby certify that I have personal knowledge of the information I have provided on this form, that this information is accurate to the best of my knowledge, and that I am authorized by my employer to complete and sign this form. I acknowledge that if I have provided false information on this form with an intent to deceive or misrepresent, my actions may expose my employer and me to criminal prosecution for fraud under federal or state law (including, but not limited to 18 U.S.C. § 1341 et seq.), and that if convicted, my employer and I may face punishment which could include substantial fines and jail.</small>		
_____ Name (print), Title	_____ Signature	_____ Date

PROGRAM WITHDRAWAL & TERMINATION

An entity's participation in MRC's Commercial Volume Program is voluntary. Either party may withdraw from participation with 10 days written notice to the other party. MRC reserves the right to remove any entity not in compliance with these guidelines from further participation in the program.

