



Mattress Recycling Council®

BYE BYE MATTRESS  
**OREGON COLLECTION SITE  
REQUIREMENTS**

**JULY 2024**



**bye bye mattress®**

A Program of the Mattress Recycling Council®

# TABLE OF CONTENTS

|   |           |
|---|-----------|
| <b>Incoming Materials</b> .....                   | <b>3</b>  |
| <b>Material Screening</b> .....                   | <b>5</b>  |
| <b>Materials Collection &amp; Handling</b> .....  | <b>7</b>  |
| <b>Transportation &amp; Processing</b> .....      | <b>9</b>  |
| <b>Environmentally Sound Management</b> .....     | <b>10</b> |
| <b>Program Withdrawal &amp; Termination</b> ..... | <b>11</b> |

## **About the Requirements**

Staff at all participating collection sites must be knowledgeable regarding these requirements before accepting mattresses. For purposes of these requirements, the term "mattress" or "unit" means the same thing as mattresses and foundations (or box springs) as defined in Section 2 of Senate Bill 1576 and Section 1 of MRC's Oregon Program Plan. These requirements describe the program and what is required to participate.

## **About the Mattress Recycling Council**

In 2022, Oregon enacted Senate Bill 1576 which requires mattress manufacturers to create a recycling program for mattresses discarded in the state. The bedding industry established the Mattress Recycling Council (MRC) to develop and operate the mattress recycling program known as Bye Bye Mattress.

## **What MRC Provides**

MRC provides the following to participating collection sites:

- A collection container to store program mattresses that is appropriate for the number of mattresses that the collection site expects to generate and the site's available space.
- Transportation from the collection site to a contracted recycler.
- No-cost mattress recycling services.

# INCOMING MATERIALS

## INCLUDED PRODUCTS

As defined in Senate Bill 1576 and in MRC's Oregon Program Plan:

**Mattress:** Defined as any sleep surface covered with ticking or fabric that contains resilient material such as steel innersprings, foam, fiber or other filling or upholstery materials, used alone or in combination, regardless of size or shape. This definition includes foam mattresses.

**Foundation (also commonly called box springs):** A ticking-covered structure that is used to support a mattress or sleep surface and that may be constructed of frames, foam, box springs or other materials, used alone or in combination. This structure can be stationary or adjustable.



**All units accepted for recycling or disposal must have been used and discarded in the state of Oregon.**

# INCOMING MATERIALS

## EXCLUDED FROM RECYCLING CONTAINER

**Participating collection sites must allow free drop-off of program mattresses in any condition.** However, units in these conditions cannot be placed in the MRC-designated storage container:

- Program mattresses that are severely wet/moldy, damaged, twisted, frozen or soiled
- Program mattresses infested with bed bugs or other living organisms



## EXCLUDED FROM NO-COST DROP-OFF (NON-PROGRAM PRODUCTS)

As defined in Senate Bill 1576 and in MRC's Oregon Program Plan, these products are excluded from the definition of mattress and foundation:

- Adjustable bases not covered in ticking or fabric
- Air mattresses that contain no upholstery material (such as camping beds)
- Car beds
- Collapsible roll-away beds
- Fold-out sofa beds
- Futon mattresses, frames and bases
- Juvenile products including crib mattresses, carriages, baskets, dressing tables, strollers, playpens, infant carriers, lounge pad, crib bumpers
- Loose bedding, blankets or sheets
- Mattress pads and toppers
- Mattresses stripped of padding components (partial units)
- Metal bed frames
- Out-of-state mattresses
- Pillows and cushions
- Sleeping bags
- Water beds



To learn more about included and excluded products, view videos in our **Resources Library** at [www.mattressrecyclingcouncil.org/resources/for-collectors](http://www.mattressrecyclingcouncil.org/resources/for-collectors)



# MATERIAL SCREENING

**All program mattresses must be accepted for drop off at no cost, regardless of their condition. Screening occurs after drop off in order for the collection site to determine if the unit goes in the MRC-designated container or is disposed of as solid waste.**

Program mattresses in the following conditions cannot be placed in the MRC-designated storage container:

- Infested with bed bugs or other living organisms
- Severely twisted, punctured or crushed
- Excessively wet or frozen
- Exceptionally soiled or moldy

Mattresses not placed in the MRC-designated container should be handled and disposed of as solid waste per your operating permit.

## BED BUG IDENTIFICATION

Mattresses and box springs infested with bed bugs are unacceptable for recycling and should be disposed of as solid waste per your operating permit. Staff at collection sites should evaluate program mattresses for evidence of bed bug infestation. A training webinar focused on dispelling health related myths, identifying bed bugs and offering best practices for protecting staff can be found here:

**<https://mattressrecyclingcouncil.org/resources/for-collectors>**



Bed bugs are tan to brown in color, but may appear redder if they have fed.

**Adult Bed Bugs** are dorsally flat insects, broadly oval and the size of an apple or melon seed (1/4").

**Nymphs** look like adults in shape but are smaller.

**Eggs** are white and barrel-shaped.

Signs of bed bug activity may be more obvious than the insects themselves. Look for clusters of dark spots or smudges on mattresses (fecal spots), especially along seams. Eggs, shed skins and all life stages of bed bugs may also be present in these 'soiled' areas.



For more information on bed bugs, please refer to the resources made possible by the **Connecticut Coalition Against Bed Bugs** at **[www.ct.gov/caes/CCABB](http://www.ct.gov/caes/CCABB)**

# MATERIAL SCREENING

**All program mattresses must be accepted for drop off at no cost, regardless of their condition. Screening occurs after drop off in order for the collection site to determine if the unit goes in the MRC-designated container or is disposed of as solid waste.**

## Acceptable For MRC's Container

Shown here are examples of units in a variety of conditions that are suitable for placement in the MRC-designated container.

As demonstrated in these photos, the units do not have to be in new or like new condition. They can be dirty, moderately soiled, lumpy or misshapen from years of use or improper storage, and have signs of wear and tear such as rips or scuffs.

**IMPORTANT:** Only units used and discarded in Oregon are accepted by the program.

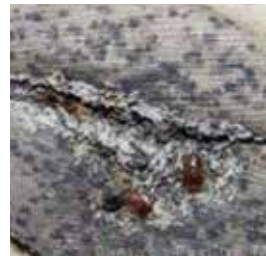


## Unacceptable For MRC's Container

Shown here are examples to illustrate severe damage, heavy soiling and infestation. Units in these conditions cannot be placed in the MRC-designated storage container. After accepting them from the public, they should be handled and disposed of as solid waste per your operating permit.

### Look for:

- Mattresses that are severely twisted, punctured or crushed
- Signs of bed bugs or other living organisms
- Severe mold
- Excessive staining from bodily fluids
- Fire damage



# MATERIALS COLLECTION & HANDLING

Each collection site will have unique operational considerations. Participating sites must make their own decisions about how to best manage their operations in the safest manner possible in accordance with applicable local, state and federal laws. At a minimum, each participating site must meet these requirements:

| MINIMUM PROGRAM REQUIREMENTS  |   |
|---|---|
| <b>SITE</b>   | Each collection site must be secure with adequate space and staffing to handle and store all program mattresses received.   |
| <b>PERMITS</b>  | Each collection site must have knowledge of and comply with all applicable federal, state and local laws. These may include, but are not limited to, zoning requirements, state permit requirements and OSHA or other workplace requirements.   |
| <b>INSURANCE</b>  | Each collection site must maintain general liability insurance of at least \$1,000,000 per occurrence.  |
| <b>TRAINING</b>   | Staff at each collection site must be trained and knowledgeable regarding these requirements before accepting mattresses for recycling.   |
| <b>STORING &amp; LOADING MATTRESSES</b><br><br>See page 8 for photos and more information | <p>Collection sites must keep mattresses dry by storing in weatherproof containers or under cover to maximize their recyclability. In addition, all collection sites must:</p> <ul style="list-style-type: none"><li>• Make every effort to place mattresses in MRC-designated storage containers immediately upon acceptance.</li><li>• Do not store units on the ground for prolonged periods of time and make every effort to keep container doors closed.</li><li>• Keep mattresses intact and not intentionally crush or puncture them.</li><li>• Efficiently stack mattresses to maximize the number of units loaded in each storage container.</li><li>• Provide oversight to keep unacceptable items out of MRC-designated storage containers.</li><li>• Remove any non-program products from MRC-designated storage containers before transport to MRC recyclers.</li><li>• Make a swap request through MRC's electronic reporting platform in advance of the onsite container reaching capacity.</li><li>• Practice good housekeeping standards and keep storage containers and program mattresses in a neat and orderly condition.</li></ul> |
| <b>SITE ACCESS</b>  | Collection sites must allow MRC access to confirm compliance with these requirements.   |

# MATERIALS COLLECTION & HANDLING

## LOADING MATTRESSES IN STORAGE CONTAINERS

Expected number of mattresses that should fit in various container sizes:

| Container Type             | Number of Mattresses |
|----------------------------|----------------------|
| 20-foot sea container      | 30-45                |
| 40-foot sea container      | 75-95                |
| 40-yard roll-off container | 35-50                |
| 48-foot trailer            | 100-120              |
| 53-foot trailer            | 120-150              |

## Acceptable Loading

- 1. Begin each stack with a queen or full size box spring.**  
This acts as a base pallet to create a secure stack and makes unloading of mattresses quick and efficient.
- 2. Mattresses should be stacked horizontally** to the top of the trailer to maximize space.
- 3.** In small quantities, king size mattresses can be placed vertically next to a stack of horizontal mattresses.
- 4.** If there are more than 10 king size units, stack horizontally.



## Unacceptable Loading

**IMPORTANT: Do not load units vertically or in an unsafe manner.**

Please contact your Program Coordinator to learn more about acceptable/non-acceptable units and appropriate stacking and loading techniques.



To learn more about screening, stacking and loading mattresses, view videos in our **Resources Library** at [www.mattressrecyclingcouncil.org/resources/for-collectors](http://www.mattressrecyclingcouncil.org/resources/for-collectors)



# TRANSPORTATION & PROCESSING

Collection sites, transporters and recyclers must use the MyMRC electronic reporting platform (<https://mrc-us.my.site.com>) for requesting pickups, managing cancellations, coordinating deliveries and reporting issues and data to MRC.

## **TRANSPORTERS**

MRC will assign each collection site a transporter to provide a storage container and transport services.

- MRC-contracted transporters will provide participating locations with evidence of automobile insurance coverage of at least \$1,000,000 per occurrence.
- The assigned transporter will pick up full containers and drop off an empty container at the same time.
- On the scheduled pickup day, the collection site must make the collection container readily accessible to the transporter.
- At the time of the pick up, the transporter may request collection site staff to sign a Bill of Lading (BOL) supplied by the transporter documenting collection site location details and the quantity of mattresses in the container.

A collection site may choose to provide its own storage containers and transportation. Such locations may only send mattresses to recyclers contracted by MRC and participating in the Program, and must schedule a drop-off time with the recycler through MRC's electronic reporting platform.

## **RECYCLERS**

Recyclers under contract with MRC will meet environmentally sound management requirements and established recycling standards to accurately account for all mattresses received, the mattress components recycled (e.g., foam, steel, wood, fiber, etc.) and any residual disposal. Collection sites will be assigned an MRC recycler to best service your facility.



# ENVIRONMENTALLY SOUND MANAGEMENT

MRC's contracts require that program participants use environmentally sound management practices to collect, transport and recycle discarded units.

For collection sites, required environmentally sound management practices include:

- Maintaining adequate record keeping. Program participants are required to maintain records related to implementation of the Program for not less than three years.
- Tracking and documenting the fate of discarded mattresses from collection through final disposition within and outside Oregon.
- Complying with all federal, state and local laws and regulations that apply to their business and operations, including air and water pollution laws, other environmental laws, worker health and safety requirements, fair labor standards rules and other laws that can affect the work and natural environment.
- Maintaining adequate liability insurance.



# PROGRAM WITHDRAWAL & TERMINATION

A collection site's participation in MRC's Bye Bye Mattress program in Oregon is voluntary. Either party may withdraw from participation in accordance with the terms in your contract. Written notice to the other party is required. MRC reserves the right to remove any collection site not in compliance with these requirements from further participation in the program.

