



Mattress Recycling Council®

BYE BYE MATTRESS
CALIFORNIA
COLLECTION GUIDELINES

PUBLISHED NOVEMBER 2023



TABLE OF CONTENTS

Program Materials	4
Quality Standards	7
Materials Collection & Handling	8
Transportation & Processing	10
Recordkeeping	11
Program Withdrawal & Termination	12

About the Guidelines

Staff at all participating collection sites must be knowledgeable regarding these guidelines before accepting mattresses. For simplicity, these guidelines will refer to mattresses and box springs as mattresses. These guidelines describe the program and what is required to participate. MRC reserves the right to update, change, modify, amend, add or remove terms or otherwise alter these guidelines at any time with or without prior notice.

About the Mattress Recycling Council

In 2013, California enacted Senate Bill 254 as amended which requires mattress manufacturers to create a recycling program for mattresses discarded in the state. The bedding industry established the Mattress Recycling Council (MRC) to develop and operate the mattress recycling program known as Bye Bye Mattress.

What MRC Provides

MRC provides the following to participating collection sites:

- A collection container to store mattresses that is appropriate for the number of mattresses that the collection site expects to generate and the site's available space
- Transportation from the collection site to a contracted recycler
- No-cost mattress recycling services

CONTACTS

MRC Program Coordinators

Mark Patti

California Program Manager

661-237-8174

mpatti@mrc-us.org

Los Angeles, Santa Barbara, Ventura

Layla Chamberlin

Northern California Coordinator

925-233-5335

lchamberlin@mrc-us.org

Alameda, Contra Costa, Lake, Marin,
Mendocino, Napa, San Francisco,
San Joaquin, San Mateo, Santa Clara,
Santa Cruz, Solano, Sonoma

Tyler Douthitt

Senior Program Coordinator, Southern California

949-534-6693

tdouthitt@mrc-us.org

Imperial, Kern, Orange, Riverside,
San Bernardino, San Diego

Jennifer Duran

Central California Coordinator

559-249-5753

jduran@mrc-us.org

Calaveras, Fresno, Inyo, Kings, Madera,
Mariposa, Merced, Mono, Monterey,
San Benito, San Luis Obispo, Stanislaus,
Tulare, Tuolumne

Christine Messer

Northern California Coordinator

916-908-3223

cmesser@mrc-us.org

Alpine, Amador, Butte, Colusa, Del Norte,
El Dorado, Glenn, Humboldt, Lassen,
Modoc, Nevada, Placer, Plumas,
Sacramento, Shasta, Sierra, Siskiyou,
Sutter, Tehama, Trinity, Yolo, Yuba

PROGRAM MATERIALS

INCLUDED PRODUCTS

Mattresses: Defined as any sleep surface covered with ticking or fabric that contains resilient material such as steel innersprings, foam, fiber or other filling or upholstery materials, used alone or in combination, regardless of size or shape. This definition includes foam mattresses.

Futons: See mattress definition above. Futon mattresses must be detachable from the frame or base to be accepted. (Futon mattresses that do not detach from the frame or base are not included.)

Box springs (also commonly called foundations): A ticking or fabric-covered structure used to support a mattress or sleep surface and may be comprised of a frame, foam, springs or other structure, or other materials, used alone or in combination, regardless of whether the product is stationary or adjustable.



All items accepted for recycling by MRC must have been used and discarded in the state of California.

PROGRAM MATERIALS

EXCLUDED PRODUCTS

- Severely wet, damaged, twisted, frozen or soiled mattresses
- Adjustable bases not covered in ticking or fabric
- Air mattresses that contain no upholstery material (such as camping beds)
- Car beds
- California Prison Industry Authority units
- Collapsible roll-away beds
- Fold-out sofa beds
- Futon frames or bases
- Juvenile products including crib mattresses, carriages, baskets, dressing tables, strollers, playpens, infant carriers, lounge pad, crib bumpers
- Loose bedding, blankets or sheets
- Mattresses infested with bed bugs or other living organisms
- Mattress pads and toppers
- Metal bed frames
- Out-of-state mattresses
- Pillows and cushions
- Sleeping bags
- Water beds

SERVING PUBLIC AGENCIES
PRISON
INDUSTRY AUTHORITY
Folsom, California 95630
ALL NEW MATERIAL

Inspected by _____
Date _____

NOTICE: THIS MATTRESS MEETS THE STANDARDS OF CALIFORNIA STATE FIRE MARSHAL AND THE CALIFORNIA BUREAU OF HOME FURNISHING TECHNICAL INFORMATION BULLETIN NUMBER 121 FOR USE IN HIGH RISK OCCURRENCES.

THIS MATTRESS MEETS OR EXCEEDS THE FC-207-760 ADDITIONAL FLAMMABILITY STA. 94ADE:

1. FEDERAL CIGARETTE IGNITION STANDARD FF-72
2. OPEN FLAME TEST PER FEDERAL TEST PROCEDURE CC-1-1918-2905; VERTICAL FLAME FOR TILT MATERIAL.
3. MEETS CALIFORNIA BUREAU OF HOME FURNISHINGS TB-129 AND TB603



PROGRAM MATERIALS

MATTRESS INSPECTION AND EXAMINATION

Collection site staff should screen incoming mattresses to determine whether they are suitable for recycling and should remove mattresses that are:

- Excessively wet or frozen
- Severely twisted, punctured or crushed
- Infested with bed bugs or other living organisms
- Exceptionally soiled or moldy

Mattresses not suitable for recycling should be disposed of through your existing solid waste stream.

Bed Bug Identification

Mattresses and box springs infested with bed bugs are unacceptable for recycling and should be disposed of through your existing solid waste stream. Staff at collection sites should evaluate program materials for evidence of bed bug infestation. A training webinar focused on dispelling health related myths, identifying bed bugs and offering best practices for protecting staff can be found here: <https://www.mattressrecyclingcouncil.org/resources>



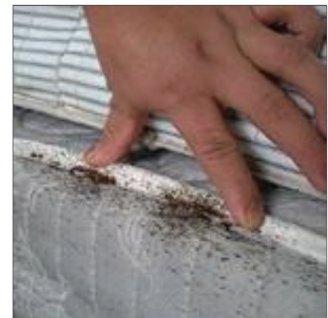
Bed bugs are tan to brown in color, but may appear redder if they have fed.

Adult Bed Bugs are dorsally flat insects, broadly oval and the size of an apple or melon seed (1/4").

Nymphs look like adults in shape but are smaller.

Eggs are white and barrel-shaped.

Signs of bed bug activity may be more obvious than the insects themselves. Look for clusters of dark spots or smudges on mattresses (fecal spots), especially along seams. Eggs, shed skins and all life stages of bed bugs may also be present in these 'soiled' areas.



For more information on bed bugs, please refer to the resources made possible by the **Connecticut Coalition Against Bed Bugs** at www.ct.gov/caes/CCABB

QUALITY STANDARDS

Acceptable Quality

IMPORTANT: Only units used and discarded in California are accepted by the program.

Shown here are examples of acceptable units.



Unacceptable Quality

Shown here are examples to illustrate severe damage, heavy soiling and infestation.

Other Conditions:

- Out-of-state mattresses
- Severely damaged or soiled mattresses
- Mattress that have been stripped of padding components.
- Pillows and cushions
- Fold-out sofa beds and futon frames or bases
- Loose mattress pads, toppers
- Loose bedding, blankets, or sheets
- Water beds
- Fire damaged units



MATERIALS COLLECTION & HANDLING

Each collection site will have unique operational considerations. Participating sites must make their own decisions about how to best manage their operations in the safest manner possible in accordance with applicable laws. At a minimum, each participating site must meet these requirements:

MINIMUM PROGRAM REQUIREMENTS	
SITE	Each collection site must be secure with adequate space and staffing to handle and store acceptable mattresses.
PERMITS	Each collection site must have knowledge of and comply with all applicable federal, state and local laws. These may include, but are not limited to, zoning requirements, state permit requirements and OSHA or other workplace requirements. Please contact your Local Enforcement Agency (LEA) to confirm whether your site is in compliance with all applicable notifications or requirements for accepting mattresses for recycling at your site. In many cases, this will be your county or local Public Health Department.
INSURANCE	Each collection site must maintain general liability insurance of at least \$1,000,000 per occurrence.
TRAINING	Staff at each collection site must be trained and knowledgeable regarding these guidelines before accepting mattresses for recycling.
STORING & LOADING MATTRESSES	<p>Collection sites must keep mattresses dry by storing in weatherproof containers or under cover to maximize their recyclability. In addition, all collection sites must:</p> <ul style="list-style-type: none"> • Make every effort to place mattresses in MRC-designated storage containers immediately upon acceptance • Do not store units on the ground for prolonged periods of time and make every effort to keep container doors closed • Keep mattresses intact and not intentionally crush or puncture them • Efficiently stack mattresses to maximize the number of units loaded in each storage container • Provide oversight to keep unacceptable items out of MRC-designated storage containers • Remove any non-program materials from MRC-designated storage containers before transport to MRC recyclers • Practice good housekeeping standards and keep storage containers and program materials in a neat and orderly condition
SITE ACCESS	Collection sites must allow MRC access to confirm compliance with these guidelines.

See page 9 for photos and guidelines

MATERIALS COLLECTION & HANDLING

LOADING MATTRESSES IN STORAGE CONTAINERS

Expected number of mattresses that should fit in various container sizes:

Container Type	Number of Mattresses
20-foot sea container	30-45
28-foot trailer	60-95
40-foot sea container	75-95
40-yard roll-off container	35-50
48-foot trailer	110-180
53-foot trailer	125-190

Acceptable Loading

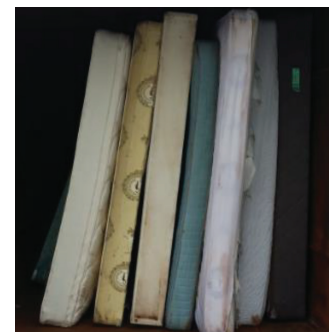
- 1. Begin each stack with a queen or full size box spring.**
This acts as a base pallet to create a secure stack and makes unloading of mattresses quick and efficient.
- 2. Mattresses should be stacked horizontally** to the top of the trailer to maximize space.
- 3.** In small quantities, king size mattresses can be placed vertically next to a stack of horizontal mattresses.
- 4.** If there are more than 10 king size units, stack horizontally.



Unacceptable Loading

IMPORTANT: Do not load units vertically or in an unsafe manner.

Please contact your Program Coordinator to learn more about acceptable/non-acceptable units and appropriate stacking and loading techniques.



TRANSPORTATION & PROCESSING

TRANSPORTERS

MRC will assign each collection site a transporter to provide a storage container and transport services.

- MRC-contracted transporters will provide participating locations with evidence of automobile insurance coverage of at least \$1,000,000 per occurrence
- Each collection site must notify transporter at least two business days before a storage container is full of mattresses
- The assigned transporter will pick up full containers and drop off an empty container at the same time
- On the scheduled pick up day, the collection site must make the collection container readily accessible to the transporter
- At the time of pick-up, collection site staff must be present to sign a three-part Bill of Lading (BOL) supplied by the transporter that details the quantity of mattresses in the container and must provide appropriate copies of the BOL to the transporter

A collection site may choose to provide its own storage containers and transportation. These locations must contact the recycler directly to arrange for a convenient drop-off time.

RECYCLERS

Recyclers under contract with MRC will meet established recycling standards and accurately account for all mattresses received, the mattress components recycled (e.g., foam, steel, wood, fiber, etc.) and any residual disposal. Collection sites will be assigned an MRC recycler to best service your facility.



RECORDKEEPING

Bill of Lading:

A Bill of Lading (BOL) will be provided by the transporter. Before a full container leaves the site, the BOL must be completed and signed by facility staff.

Annual Reporting to CalRecycle:

Per the law, mattress recyclers, renovators, and solid waste facilities, as defined by Public Resources Code section 42986, must submit an annual report to CalRecycle by May 1 each year. The annual reports must meet the requirements listed in Title 14, California Code of Regulations (CCR) sections 18965-18967, which includes contact information and quantitative information. Annual reports are used by CalRecycle and MRC to assess the program and establish and update the mattress recycling goals for the state.

See CalRecycle's website for more information:

<https://www.calrecycle.ca.gov/Mattresses/AnnualReport/>

BILL OF LADING		
Unique BOL #:		Truck #:
Collection Site/ Generator		
Facility Name and Operator:		
Address:		
Type of Collection Site:	<input type="checkbox"/> solid waste facility	<input type="checkbox"/> mattress retailer <input type="checkbox"/> other:
Collection Container Type:	<input type="checkbox"/> 20 ft. sea container	<input type="checkbox"/> 40 ft. sea container <input type="checkbox"/> 28 ft. trailer
	<input type="checkbox"/> 48 ft. trailer	<input type="checkbox"/> 53 ft. trailer <input type="checkbox"/> other:
Collection Site Count:	Mattress and Box Spring Units: _____	
Collection Site Certified Net Weight (if available):	_____ lbs.	
I hereby certify that to the best of my knowledge, the above information is accurate, and all of the products described in this document were used and discarded in California.		
_____	_____	_____
Name (print), Title	Signature	Date
Transporter		
Company Name:		
Address:		
Notes for ancillary charges:		
_____	_____	_____
Name (print), Title	Signature	Date
Mattress Recycler		
Company Name:	Appointment Date / Time:	
Address:	Arrival Date / Time:	
Recycler Count:	Total Units: _____	Departure Time:
Net Weight of all Mattress and Box Spring Units:	_____ lbs.	
Comments/Count Discrepancies:		
I hereby certify that to the best of my knowledge, the above information is accurate, and all of the products described in this document were used and discarded in California.		
_____	_____	_____
Name (print), Title	Signature	Date

Template Rev. 7/6/2020

PROGRAM WITHDRAWAL & TERMINATION

A collection site's participation in MRC's Bye Bye Mattress program in California is voluntary. Either party may withdraw from participation in accordance with the terms in your contract. Written notice to the other party is required. MRC reserves the right to remove any collection site not in compliance with these guidelines from further participation in the program.

